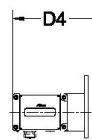


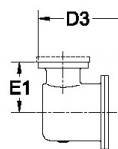


ROMET

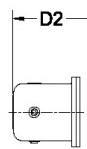
Rotary Gas Meters



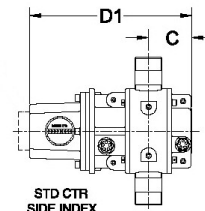
AdEM



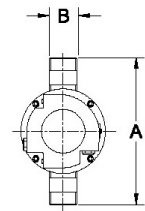
STDID / DCID



STD CTR
END INDEX



STD CTR
SIDE INDEX



Note: AMI/AMR adaptors available upon request.

METER SIZE	A	B	C	D1	D1 (no Mag. Hsg)	D2	D3	D4	E1	WEIGHT (lbs)
RM1500	10.50"	1.5" NPT	3.44"	11.29"	8.83"	12.77"	13.60"	14.49"	4.00"	13-16

RM1500 - IMPERIAL

IMPERIAL RM1500 1.5" NPT CONNECTION

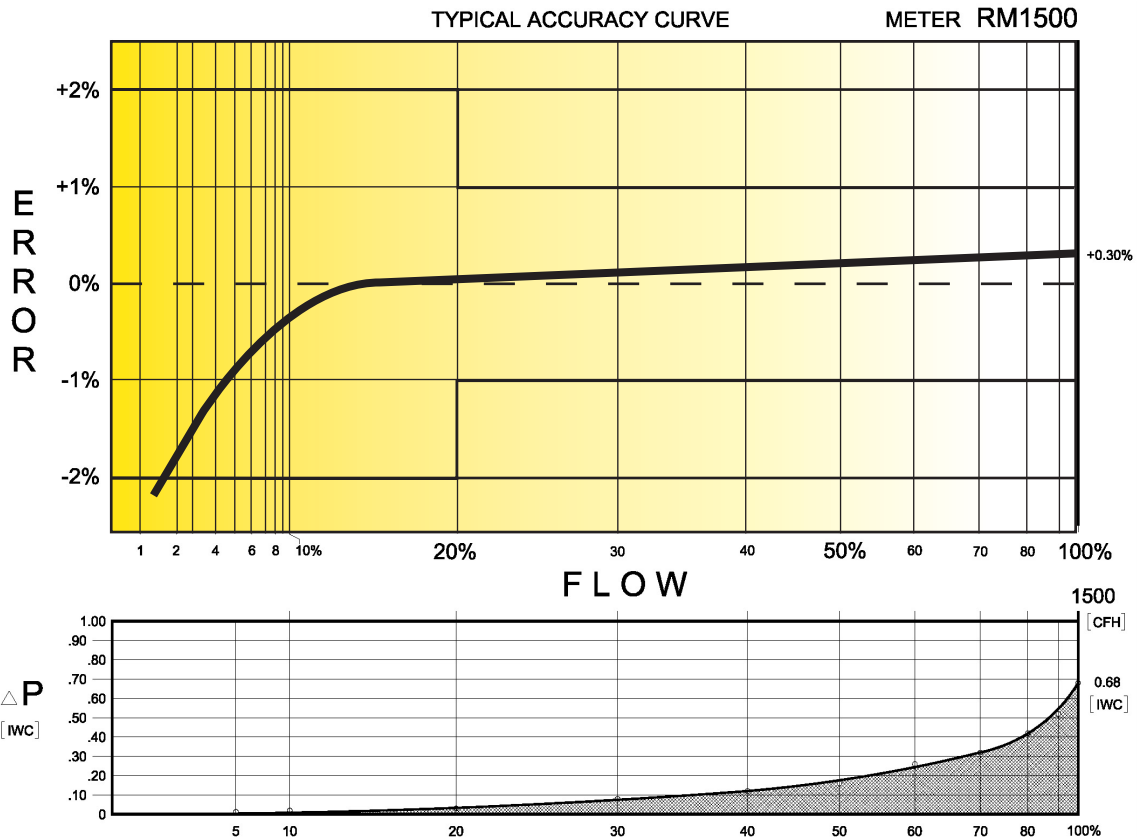
TECHNICAL SPECIFICATION

Connection (Threaded)	NPT	1.5"
MAOP	(psig)	175/200
Flow Capacity	(cfh)	1500
Rangeability* (up to 1:160 @ atmospheric condition)		1:160
Start Rate	(cfh)	2.0
Stop Rate	(cfh)	1.5
Differential @ 100% Flow	(I.W.C.)	0.60
Instrument Drive Rate	(cf/rev)	10
LF Pulser (Optional)	(cf/pulse)	10

*Note: It should be noted, that moving parts in the meters with greater rangeability ratio are made to high class accuracy and tight tolerances. Improper installation, stresses on piping system due to temperature changes, settling and gas conditions can create a risk of meter rejection.

CORRECTED FLOW CAPACITY AND TYPICAL ACCURACY GUIDE

RM1500 METER (SCFH)	
Gauge Pressure P.S.I.G. 0.25	RM1500 Qmax = 1500ft ³ /hr
2	1568
5	1976
10	2485
15	2994
20	3503
25	4012
50	6558
75	9104
100	11650
125	14196
150	16741
175	19287



ROMET

GAS METERS AND ELECTRONIC INSTRUMENTS
 Phone 905-624-1591 USA 1-800-387-3201
 www.rometlimited.com • email: romet@rometlimited.com

The values quoted are typical of normal production. They do not constitute a specification. Romem Limited reserves the right to change any information in this literature without notice. All of the information and data in this literature has been carefully compiled and thoroughly checked. However, Romem Limited will not assume responsibility for any possible omissions or errors.

ROMET and ROMET & DESIGN are registered trademarks of Romem Limited. Romem Limited's gas metering technology is protected under U.S. Patent No. 4,910,519 and 6,453,721 and Canadian Patent No. 1,293,568.